

# *ekton*





# Today to Tomorrow

EKTON, is one of the leading brands in our region, operating in the field of production, construction, contracting, logistics, excavation, renewable energy and agriculture, with the aim of making its development continuously successful, thanks to our business philosophy based on quality and sincerity, despite the ever-changing economic conditions and the heavy pressures caused by the periodic crises in the new global market.

Today, EKTON is a ready company for the future with the help of its experienced staff and wide machinery and equipment park in its fields, producing for the infrastructure and superstructure needs in our country and abroad, increasing its capacity with new investments and following the latest technology.

If you want quality and good service, let's meet at EKTON. It is our job to provide you with appropriate solutions.



# Institutional

EKTON has progressed rapidly since it started its business life in 1985 and has achieved to have a voice in the sector. EKTON has been active in many sectors since its establishment; and came to today, focusing on service and industry.

EKTON, operating in the contracting and service sector in 1985, expanded its field of activity by entering into concrete building elements production, construction contracting services, contracting, logistics, excavation, agriculture and renewable energy.

Since the day it was founded, EKTON has prioritized customer satisfaction and occupational safety of its employees. Our business volume with our business partners and suppliers is increasing day by day. As EKTON; we are committed to comply with our national values, current laws and regulations, environmental awareness, and universal ethical values. These are also indispensable principles of our employees.

# Vision

To continue to increase the prestigious, reliable and preferred brand with its products and services in international quality standards in the sectors in which we operate; is to become one of the leading names in the fields of business where it sees growth potential by moving its achievements to the international arena.

# Mission

The mission of our group is:

- Growing its portfolio with its investor identity by moving it to different business areas that provide social and economic benefits and important projects,
- To serve with the understanding of institutional quality by using modern technology, expert human resources, knowledge accumulation by applying the investment policy shaped on the basis of principles of being first and creating difference.
- To act with the awareness that the profitability goes through quality in the long term,
- To contribute to the development of the sectors and economy in which it operates,
- To ensure sustainability as a trusted group.



# Quality Policy

EKTON carries out its activities with its strong and experienced staff.

EKTON forms the basis of quality policy, to meet customer expectations and needs effectively.

EKTON provides services at international level in accordance with the legal regulations and specifications related to service and production. In this direction, is a company that has adopted the principles;

- Rapid solutions to changing customer expectations,
- To use their resources effectively and efficiently,
- To maximize performance and competitiveness,
- Providing control at every stage,
- Systematic work,
- Compliance with quality standards in production,
- Integrity and determination to achieve,
- Environmentally friendly production policy,
- To give importance to team work,
- To be open to innovation and R & D,
- To help the development of our country and our region.



# Environmental Management

Our Environmental Consciousness;

Our company, showing a high level of sensitivity to environmental problems, provides;

- Formation of solid waste management system,
- Design of regular landfill sites,
- Collection and treatment of leachate water,
- Rehabilitation of old, irregular landfills,
- Operation of solid waste landfills,
- The construction and control of solid waste storage areas

# OHS Management

The health and safety of every individual affected by the product realization process is indispensable.

Our aims with this system that we set, are;

- To prevent potential hazards at source,
- To keep our risks at acceptable levels,
- To raise awareness by creating workspaces in healthy conditions,
- To contribute to the establishment of occupational health and safety culture.

## **Our OHS Consciousness**

The awareness that accidents can be prevented with a proactive approach based on risk assessment is conveyed to our employees. Education and meetings are primarily used in the dissemination of this consciousness.

## **OHS Trainings**

Our Periodically organized internal and external trainings are;

- |                                     |                                       |
|-------------------------------------|---------------------------------------|
| - Orientation                       | - Warning Signs                       |
| - OHS basic education               | - OHS in Maintenance and Repair Works |
| - PPE, GPE                          | - Operator Training                   |
| - Risk assessment                   | - Welding Technology and Technology   |
| - Working at height and scaffolding | - OHS in Screened Equipment           |
| - OHS in Electrical Works           | - Fire and Fire Protection            |
| - OHS in Manual Works               | - Business law                        |
| - Business Equipments               |                                       |
| - First aid                         |                                       |

# Our Activities

Our company has been active since 1985 in; production, construction, contracting, logistics, excavation, renewable energy and agricultural sector.

## **A. Construction and Project Applications**

- ✓ Turnkey construction works
- ✓ Solid waste landfill construction
- ✓ Environmental regulations after construction
- ✓ Residential and complex building construction works
- ✓ Urban transformation applications and services

## **B. Contracting Services**

- ✓ Road construction
- ✓ Infrastructure and purification works
- ✓ Waste Storage Area (Landfill Management)
- ✓ Staff supply services (skilled and unskilled)
- ✓ Cleaning, Park & Garden Services

## **C. Logistics and Procurement Services**

- ✓ Transportation Services
- ✓ Machinery and Equipment Supply and Leasing Services
- ✓ Stone and Sand quarry management
- ✓ Fly Ash Supply Services
- ✓ Gypsum Supply Services

## **D. Excavation and Stream Rehabilitation Practices**

- ✓ Pickling, Dam Construction, Controlled Excavation and Filling Works
- ✓ Ground Improvement
- ✓ Stream Improvement and Flood Protection Structures

## **E. Agriculture Management**

- ✓ Fruit Processing Activities
- ✓ Other Agricultural Products

## **F. Renewable Energy Production Activity**

- ✓ 12.50 MWm Biomass Power Plant

# Our References

**isken**  
İskenderun Enerji Üretim ve Ticaret A. Ş.



**ayas**



# Our Certificates

**PCA**  
PARTNERS CERTIFICATE  
ASSURANCE

**Sertifika**

**ISO 9001 : 2015**

**EKTON İNŞAAT MÜTEAHHİTLİK LOJİSTİK  
SANAYİ VE TİCARET A.Ş.**

**E-5 Karayolu Üzeri Koruklu Mevki Ceyhan Adana/ TÜRKİYE**

Bu sertifika yukarıdaki kuruluşa ait kalite yönetim sisteminin aşağıdaki kapsam çerçevesinde PCA Sertifikasyon tarafından onaylanmış olduğunu göstermektedir. Kuruluşun yıllık yönetim denetimlerinden geçmesi ve Uluslararası akreditasyon kuralları gereğince ilgili yönetim sisteminin şartlarını devam ettirmesine bağlıdır.

**KAPSAM**

Altyapı, Üstü yapı işleri ve müteahhittliği, elektrik üretim tesisleri, inşaat işleri ve müteahhittliği, boru hattı ve yakıt tesisleri inşaat işleri ve müteahhittliği, prefabrik yapıların inşaatı, atık toplama sahaları inşaatı, çelik konstrüksiyon imalatı ve satışı

**SA KODU**  
17-28

**Sertifika No** : KY-24127  
**Tescil Tarihi** : 05.12.2017  
**Yeniden Basım Tarihi** : 10.12.2018  
**Geçerlilik Tarihi** : 04.12.2019  
**Belge Periyodu** : 3 Yıl (Tescil Tarihinden itibaren)  
**Harc Tutarı** :

**ACCREDITED**  
Management  
Systems  
Certification Body  
MSCB-103

**PCA Sertifikasyon Onayı**

PCA Sertifikasyon Hizmetleri Limited Şirketi  
Atalar Mah. Çarşıbaşı Cad. No:79 D:3 Kat:1 / İSTANBUL  
Tel: +90 216 510 83 48-49 Pbx Faks: +90 216 517 83 49  
www.pca-tr.com info@pca-tr.com

FR.86 Rev.4

**PCA**  
PARTNERS CERTIFICATE  
ASSURANCE

**Sertifika**

**ISO 14001 : 2015**

**EKTON İNŞAAT MÜTEAHHİTLİK LOJİSTİK  
SANAYİ VE TİCARET A.Ş.**

**E-5 Karayolu Üzeri Koruklu Mevki Ceyhan Adana/ TÜRKİYE**

Bu sertifika yukarıdaki kuruluşa ait çevre yönetim sisteminin aşağıdaki kapsam çerçevesinde PCA Sertifikasyon tarafından onaylanmış olduğunu göstermektedir. Kuruluşun yıllık yönetim denetimlerinden geçmesi ve Uluslararası akreditasyon kuralları gereğince ilgili yönetim sisteminin şartlarını devam ettirmesine bağlıdır.

**KAPSAM**

Altyapı, Üstü yapı işleri ve müteahhittliği, elektrik üretim tesisleri, inşaat işleri ve müteahhittliği, boru hattı ve yakıt tesisleri inşaat işleri ve müteahhittliği, prefabrik yapıların inşaatı, atık toplama sahaları inşaatı, çelik konstrüksiyon imalatı ve satışı

**SA KODU**  
17-28

**Sertifika No** : CY-31783  
**Tescil Tarihi** : 05.12.2017  
**Yeniden Basım Tarihi** : 10.12.2018  
**Geçerlilik Tarihi** : 04.12.2019  
**Belge Periyodu** : 3 Yıl (Tescil Tarihinden itibaren)

**ACCREDITED**  
Management  
Systems  
Certification Body  
MSCB-103

**PCA Sertifikasyon Onayı**

PCA Sertifikasyon Hizmetleri Limited Şirketi  
Atalar Mah. Çarşıbaşı Cad. No:79 D:3 Kat:1 / İSTANBUL  
Tel: +90 216 510 83 48-49 Pbx Faks: +90 216 517 83 49  
www.pca-tr.com info@pca-tr.com

FR.86 Rev.4

**PCA**  
PARTNERS CERTIFICATE  
ASSURANCE

**Sertifika**

**OHSAS 18001 : 2007**

**EKTON İNŞAAT MÜTEAHHİTLİK LOJİSTİK  
SANAYİ VE TİCARET A.Ş.**

**E-5 Karayolu Üzeri Koruklu Mevki Ceyhan Adana/ TÜRKİYE**

Bu sertifika yukarıdaki kuruluşa ait iş sağlığı ve güvenliği yönetim sisteminin aşağıdaki kapsam çerçevesinde PCA Sertifikasyon tarafından onaylanmış olduğunu göstermektedir. Kuruluşun yıllık yönetim denetimlerinden geçmesi ve Uluslararası akreditasyon kuralları gereğince ilgili yönetim sisteminin şartlarını devam ettirmesine bağlıdır.

**KAPSAM**

Altyapı, Üstü yapı işleri ve müteahhittliği, elektrik üretim tesisleri, inşaat işleri ve müteahhittliği, boru hattı ve yakıt tesisleri inşaat işleri ve müteahhittliği, prefabrik yapıların inşaatı, atık toplama sahaları inşaatı, çelik konstrüksiyon imalatı ve satışı

**Sertifika No** : OH-51578  
**Tescil Tarihi** : 05.12.2017  
**Yeniden Basım Tarihi** : 10.12.2018  
**Geçerlilik Tarihi** : 04.12.2019  
**Belge Periyodu** : 3 Yıl (Tescil Tarihinden itibaren)

**PCA Sertifikasyon Onayı**

PCA Sertifikasyon Hizmetleri Limited Şirketi  
Atalar Mah. Çarşıbaşı Cad. No:79 D:3 Kat:1 / İSTANBUL  
Tel: +90 216 510 83 48-49 Pbx Faks: +90 216 517 83 49  
www.pca-tr.com info@pca-tr.com

FR.86 Rev.4

**UDM**

**SERTİFİKA**

**87002**

Bu sertifika aşağıda adı geçen kuruluş UDEM Uluslararası Belgelendirme Denetim Eğitim Merkezi San. ve Tic. Ltd. Şti. tarafından verilmiştir.

**Ekton İnşaat Müteahhittlik Lojistik  
Sanayi ve Ticaret A.Ş.**

**E-5 Karayolu Üzeri Koruklu Mevki Ceyhan  
ADANA / TÜRKİYE**

**HACCP**

Kapsam: Altyapı, Üstü yapı işleri ve müteahhittliği, elektrik üretim tesisleri, inşaat işleri ve müteahhittliği, boru hattı ve yakıt tesisleri inşaat işleri ve müteahhittliği, prefabrik yapıların inşaatı, atık toplama sahaları inşaatı, çelik konstrüksiyon imalatı ve satışı

**Belgelendirme Denetim Tarihi** : 23.12.2011  
**Tescil Tarihi** : 06.01.2012  
**Yeniden Basım Tarihi** : 15.12.2014  
**Geçerlilik Tarihi** : 05.01.2016

**UDM Uluslararası Belgelendirme  
Denetim Eğitim Merkezi  
San. ve Tic. Ltd. Şti. Onayı**

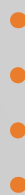
UDM Uluslararası Belgelendirme Denetim Eğitim Merkezi Sanayi ve Ticaret Limited Şirketi bu belge ile adı geçen kuruluşun yukarıdaki standartlara uygun bir yönetim sisteminin sahip olduğunu belgeler. Sistem etkin bir şekilde sürdürüldüğü ve yönetim denetim zamanında yapıldığı müddetçe bu belge tescil tarihinden itibaren 3 yıl boyunca geçerlidir. Belgenin geçerliliği [www.udemtd.com.tr](http://www.udemtd.com.tr) internet sayfasından kontrol edilebilir. Bu belgenin mülkiyet hakkı UDEM Uluslararası Belgelendirme Denetim Eğitim Merkezi Sanayi ve Ticaret Limited Şirketi'ne aittir ve izinsizlikle hiçbir şekilde edilemez.

Adres: Mülkiyet Mahallesi 2073 Sokak (Eski 93 Sokak) No:30 Çankaya - Ankara - TÜRKİYE  
Tel: +90 312 443 03 90 İşletme Faks: +90 312 443 03 76  
E-posta: [info@udemtd.com.tr](mailto:info@udemtd.com.tr) Web: [www.udemtd.com.tr](http://www.udemtd.com.tr)

# Construction and Project Applications

EKTON has entered the construction sector in 1985 with the principle of high quality construction - quality life in order to present its knowledge and experience to a wide customer portfolio in our rapidly growing country.

EKTON, which has gained a voice in the sector in a short time, aims to increase its investments in this direction and to contribute to the economy of our country and to leave a more livable world for future generations. In this direction; it has started to operate in the fields of turnkey construction works, solid waste landfill construction, environmental regulations, complex structures and urban transformation application.



*We are constructing not Today but the Future.*



# Ekton Hilalkent Residences

**DESCRIPTION OF THE WORK:** Construction of 260 socially furnished residences and 2 street shops

**EMPLOYER:** Tarsus İmar Tic. Ltd. Sti.

**LOCATION OF WORK:** Tarsus / MERSİN

**ESTIMATED COST:** 16.000.000,00 USD

**START DATE:** 28.06.2012

**DATE OF COMPLETION:** 29.06.2016

**DURATION:** 731 Days

**PROJECT INFORMATION:** The EKTON Hilalkent project was built right next to the Atatürk Theater Center in the district of Tarsus in Mersin, rising from Kırklarsırtı to the sky in 5 blocks. Designed with EKTON assurance and quality, Hilalkent Residences offer a livable environment with its modern lines and social facilities.

Hilalkent Project, with quality and comfort, it blends colors carefully and offers stylish living spaces to homeowners in Hilalkent, which covers the whole life with its 60.669 m2 usage area and 3 + 1 open / closed kitchen apartment options and street shops, outdoor swimming pool, basketball court, playground, fitness areas, walkways and landscape.







# Ekton Residences Ceyhan

**DESCRIPTION OF THE WORK:** Ekton Residences

**EMPLOYER:** Ekton Construction A.Ş.

**PLACE OF WORK:** Ceyhan / Adana

**ESTIMATED COST:** 1.965.000,00 USD

**START DATE:** 12.02.2013

**DATE OF COMPLETION:** 28.03.2014

**DURATION:** 409 Days

**PROJECT INFORMATION:** EKTON Residences project was constructed as 7 blocks, 3 storeys, 42 houses and 2 street shops in the Republic of Ceyhan district of Adana province.

In this project, it offers living areas where the neighborhood relations are at the top level, and the social areas and the areas of trust and quality come together. with 6703 m2 usage area and 3 + 1 open / closed kitchen apartment options.



# Necati Akçağlılar Primary School

**DESCRIPTION OF THE WORK:** CONSTRUCTION OF NECATI AKÇAĞLILAR PRIMARY SCHOOL

**EMPLOYER:** TEKFEN EDUCATION, HEALTH, CULTURE, ART AND NATURAL ASSETS  
PROTECTION FOUNDATION

**PLACE OF WORK:** Ceyhan / Adana

**ESTIMATED COST:** 1.261.014,00 USD

**START DATE:** 22.06.2011

**DATE OF COMPLETION:** 29.03.2012

**DURATION:** 281 Days

**PROJECT INFORMATION:** TEKFEN is a construction work of NECATİ AKÇAĞLILAR PRIMARY SCHOOL with 28 classrooms built in Sarımazı town of Ceyhan district of Adana, Foundation of Education, Health, Culture, Art and Natural Assets Preservation.



# Payas Municipality Construction of Service Building

**DESCRIPTION OF THE WORK:** Municipal Service Building construction work

**EMPLOYER:** Payas Municipality

**LOCATION:** Payas / Hatay

**ESTIMATED COST:** 2.000.000,00 USD

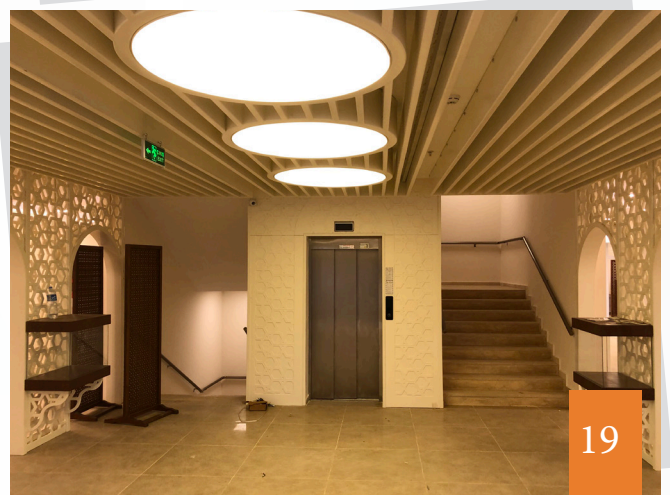
**START DATE:** 26.05.2018

**DATE OF COMPLETION:** 30.06.2019

**DURATION:** 339 Days

**PROJECT INFORMATION:** The construction of the municipality service building was carried out within the scope of work.









## EKTON Park

Ekton Park project, which is planned to be implemented in Tarsus district of Mersin province, has 80.000,00 m2 usage area; With open and closed street market in the ground, it will rise in 2 blocks. The project will consist of 142 residences, 45 commercial offices, 103 rooms and 106 street shops.

When you enter the market, designed with the open street shop architecture of Ekton Park, Ekton Park, with its stores and sub-square bazaar, a swimming pool, a cinema hall, a gym, a games room and a Turkish bath, and social areas where everyone can enjoy from seven to seventy, will offer you a privileged life style







# Contracting Services

EKTON, has been carrying out its contracting services with its expert staff since 1985 until today. It continues to share it's rich knowledge and experience with her business partners.

With the awareness that providing services is an important activity; it is going on it's road construction works, infrastructure and treatment plant works, waste storage service (Landfill Management), qualified and unqualified personnel supplying services.



*In confidence Since 1985...*



# Isken Contracting Works

**DESCRIPTION:** ISKENDERUN ENERGY PRODUCTION AND TRADE INC.

**PLACE OF WORK:** YUMURTALIK / ADANA

**ESTIMATED COST:** 14.936.686,00 USD - Total Charge in Annual Contracts

**START DATE:** 03.05.2006

**COMPLETION DATE:** In progress

**DURATION :** In Progress

**PROJECT INFO:** Since 2004, in our business partnership with trust and quality, in short, the following works are done:

- 1 - Transporting the 30,000 tons of gypsum in the gypsum storage area to the port of Toros and loading into the ship doing all the necessary transactions.
- 2 - Gypsum, Base ash and Fly ash supply agreement.
- 3 - FGD Sludge transport and waste container business service contract.
- 4 - Work machinery and equipment supply service.
- 5 - Staff supply services contract.
- 6 - Landfill Management service contract.











# Toros Tarım Contracting Works

**DESCRIPTION:** TOROS AGRICULTURAL INDUSTRY AND TRADE INC.

**LOCATION:** CEYHAN / ADANA

**ESTIMATED COST:** 50.518.918,00 USD - Total Price in Annual Contracts

**START DATE:** 01.01.1985

**COMPLETION DATE:** In progress

**PERIOD:** In progress

**PROJECT INFO:** Since 1985, in our business partnership with trust and quality, in short, the following works are done:

- 1 - The supply and transport of sand from our Deveciüşağı sand quarry with an annual capacity of 100.000 tons for the supply of the raw materials used in the production of Toros Gübre.
- 2 - Turn-key machinery, equipment, off-open fields and stockpile supply works.
- 3 - Turnkey solid and liquid terminal operations and port operation.
- 4 - Social facilities and guest house operation and landscaping works.









## Yozgat Municipality

**DESCRIPTION:** RAIN WATER COLLECTION AND DISCHARGE NETWORK LINES  
CONSTRUCTION COLLECTION AND DISCHARGE NETWORK LINES

**PROVIDER:** YOZGAT MUNICIPALITY

**LOCATION:** YOZGAT MERKEZ

**ESTIMATED COST:** 1.926.562,00 EURO

**START DATE:** 01.06.2007

**COMPLETION DATE:** 01.11.2007

**DURATION:** 166 Days

**PROJECT INFORMATION:** With in the scope of the project supported by the European Union Support Fund, approximately 15,000 mt of concrete pipe rainwater line and artworks, 50,000 m3 of excavation and filling work were carried out.





## Yumurtalık Municipality

**DESCRIPTION:** YUMURTALIK MUNICIPALITY AKDENIZ QUARTER INFRASTRUCTURE, SEWERAGE AND BIOLOGICAL TREATMENT PLANT CONSTRUCTION

**EMPLOYER:** YUMURTALIK MUNICIPALITY

**PLACE OF WORK:** YUMURTALIK / ADANA

**ESTIMATED COST:** 1.690.115.00 USD

**START DATE:** 30.11.2004

**COMPLETION DATE:** 24.10.2005

**DURATION:** 328 Days

**PROJECT INFO:** Within the scope of the grant Project of : İskenderun Enerji Üretim ve Tic. A.Ş., 8,000 mt of sewerage with concrete pipes and biological treatment plant for 15,000 persons were constructed in the Akdeniz Quarter of the Yumurtalık district of Adana province.





## Ceyhan Municipality

**JOB DESCRIPTION:** CEYHAN MUNICIPALITY PARQUET STONE, RAIN GUTTER AND CURBSTONE SUPPLY AND CONSTRUCTION

**EMPLOYER :** CEYHAN MUNICIPALITY

**LOCATION:** CEYHAN / ADANA

**ESTIMATED COST:** 4.609.682,00 USD

**START DATE:** 01.12.2007

**COMPLETION DATE:** 31.03.2009

**DURATION:** 486 Days

**PROJECT INFO:** Construction and Laying Works of a total of 300,000 m<sup>2</sup> of parquet, 180,000 mt of curbstone and 200,000 mt of gutter in 11 primary school gardens , various roads and streets, Ceyhan Industrial Site, in Ceyhan District of Adana Province, between 2007 and 2009.





## Payas Municipality

**DESCRIPTION:** CONSTRUCTION WORK of PEDWAY ON PAYAS BOTAS PETROLEUM PIPE LINE

**EMPLOYER:** PAYAS MUNICIPALITY

**PLACE OF WORK:** PAYAS / ANTAKYA

**ESTIMATED COST:** 1.107.051,00 USD

**STARTING DATE:** 04.10.2008

**COMPLETION DATE:** 19.05.2009

**DURATION:** 227 Days

**PROJECT INFO:** Within the boundaries of the Payas Municipality, on the Botaş Petroleum Pipeline, as a multi-purpose sports and walking path, the construction and installation Works of 50,000 m<sup>2</sup> of parquet, 25,000 mt of curbstone and 20,000 mt of rain gutters.



## Municipality of Tarsus

**DESCRIPTION:** TARSUS INTER-CITY BUS TERMINAL, WORKS OF ORGANISING MISCELLANEOUS ROADS AND STREETS, INFRASTRUCTURE, PARQUET STONE AND CURBSTONE COVERING

**EMPLOYER :** TARSUS MUNICIPALITY

**PLACE OF WORK:** TARSUS / MERSİN

**ESTIMATED COST:** 2.375.103,00 USD

**START DATE:** 01.08.2002

**COMPLETION DATE:** 31.12.2007

**PERIOD:** 1978 Days

**PROJECT INFO:** Between 2002 and 2007, construction and laying Works of 450.000 m<sup>2</sup> of parquet, 300.000 mt of curbstone and 150.000 mt of rain gutters in various quarters and bus terminals in Tarsus district of Mersin province.





# Logistics and Supply Services

In addition to its construction and contracting activities, EKTON has accelerated its investments in logistics, and in this context, renewing its fleet of machinery and equipment, has adopted the principle of providing all the demands from customers in a fast and trouble-free manner on a national scale.

When you say logistics and supply, what comes to our mind is ;

No limitation on service, Responsibility, Experience, Diligence, Discipline, Technology, Stability, Versatility, Innovation, Excellence, Success, Solution Partnership, a chain for reaching the successes and objectives.

Our procurement service, which is based on the principle of fast, high quality and on-site solution, requires a wide construction machinery and equipment track, technological infrastructure, and the ability of the professional staff to move.

EKTON has always provided logistic and procurement services within its own structure and serves as a solution partner to its customers without the need for any other company.



*We Carry the World...*

*"In the Right Place At the Right Time..."*



All kinds of logistic and procurement works are carried out in a reliable and fast manner to various points of our country from Edirne to Kars, Sinop to Anamur with our latest model truck and truck fleet. In this context;

### **I. Domestic Transportation Services**

As EKTÖN, we are at your service with our strong infrastructure and wide vehicle fleet that can provide different services to different loads in order to better reflect our service concept

### **II. Sand Supply, Loading and Shipping Services**

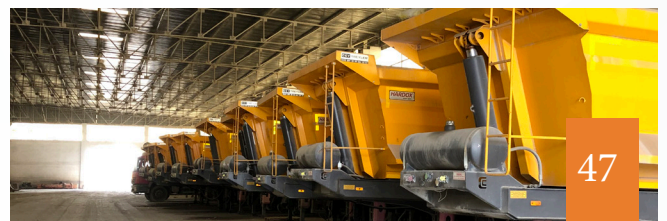
Sand supply is provided from our quarries with a face measurement of 182.000 m<sup>2</sup>. 800 tons of sand is transported to Toros Fertilizer per day by means of our machinery, lorry and truck fleet.

### **III. Gypsum Loading, Transport and Port Services**

By loading from the Gypsum Storage Site of İskenderun Power Plant, 20.000 tons of material is transported to the vessels in the port of Toros with the expertise of EKTÖN, No matter what you need, we have a tool to facilitate your work at EKTÖN.

# Vehicle Garage

NO	MODEL	TRADEMARK	QUANTITY (PIECE)
1	TRUCK	MERCEDES 1840 LS	51
2	DUMP TRAILER	SERIN	50
3	POOL TRAILER	CEYTREYLER	20
4	DUMP TRAILER	DAMERLİ DOMAKINSANRSE	4
5	BULK TRAILER	GUVEN	17
6	BULK TRAILER	PRODUCED BY ALIRIZA	7
7	TWO AXLE TRUCK	MERCEDES 4140	2
8	DUMP TRAILER	MERCEDES 3228	3
9	DUMP TRAILER	MERCEDES 2528	5
10	WATER TANK	MERCEDES	2
11	LOWBET (40 TONS)	PRODUCED BY ALIRIZA	1
12	CONTAINER CRANE	HINO	2
13	CONTAINER CRANE	IVECO	2
14	WIPER VEHICLE	IVECO	2
15	SAL TRAILER	SERT	2
16	TRACTOR	JOHN DEERE	1
17	PICK UP	FORD	3
18	SERVICE VEHICLE	FIAT DOBLO	3
19	MINIBUS	FORD	3
20	GENERATOR 100 KV	AKSA	1
21	PASSENGER VEHICLE	SUNDRY	20



# Machinery Garage

NO	MODEL	TRADEMARK	QUANTITY (PIECE)
1	EXCAVATOR	HITACHI ZX 670 LCH - 3	2
2	EXCAVATOR	HITACHI ZX 520 LCH - 3	4
3	EXCAVATOR	HITACHI ZX 470 LCH - 3	3
4	EXCAVATOR	HITACHI 550	1
5	EXCAVATOR	KOMATSU PC 400	1
6	EXCAVATOR	KOMATSU PC200	2
7	DOZER	KOMATSU155 AX	2
8	LODER	KOMATSU WA 480	1
9	LODER	KAWASAKI 90ZV - 2	5
10	LODER	CAT 950 G	1
11	GREYDER	NOBAS HBM	1
12	BACHOE	CAD 428	2
13	BACHOE	KOMATSU WB93R-5	2
14	FORKLIFT	LINDA ( 3 TONS )	4
15	ROAD ROLLER	CAD CS 533	3



# Supply Services

“The ability of a contracting firm to do the work it promises is directly related to the financial strength and market reputation.”

EKTON, thanks to its equipment and years of experience, specializes in supplying the services required by the companies with a sense of responsibility.

In EKTON procurement services,

- Wide range of vehicles and work machines
- Fully equipped equipment support
- Technology background
- Working with the principle of practical and immediate solution with the dynamic staff privilege with fast access capability.

Ekton, is a strong supplier company, successfully fulfilling its:

- A) Work machine and equipment support,
- B) Cement additive supply (Fly Ash)
- C) Gypsum supply
- D) Base ash supply
- E) Sand supply services
- F) Environmental cleaning service with specially equipped vehicles





## Fly Ash Supply

Fly Ash is a concrete additive that is produced as a by-product by thermal power plant and which is F type and TS EN 450-1: 2013 standards.

Our company realizes the supply and transportation services of fly ash to 1000 kg capacity big-bag bags or in bulk with silobas, domestic and international construction companies, cement factories, concrete plants, environmentally compatible and standards. These services are carried out by road and sea transportation. The closest port distance to our company is only 5 km.

# Why Fly Ash?

Fly Ash is a pozzolanic mineral admixture which has been preferred and preferred for years in the developed world. As a result of recent researches, fly ash has become widely used in cement and concrete production.

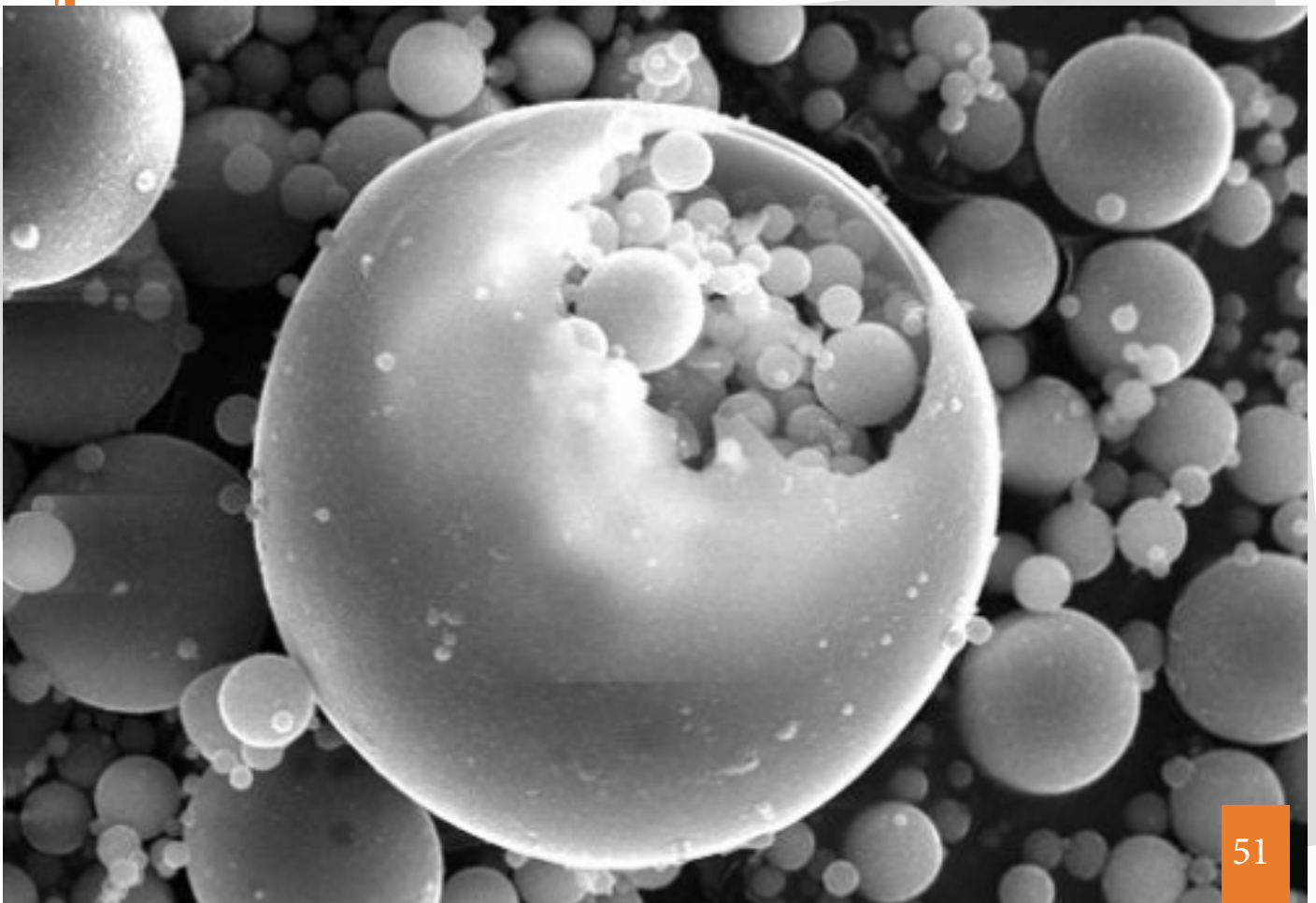
Fly Ash contains silica, aluminum and iron. It is the concrete additive used to obtain the highest performance compared to other cement and concrete applications.

This material, which has a positive effect on the many properties of th

e concrete in appropriate proportions and in proper use, is also the subject of choice by highlighting the cost-reducing effects in the ready-mixed concrete industry.

Some of the reasons why fly ash is preferred in the production of ready-mixed concrete and building elements are:

- Increases strength in fly ash concrete
- Increases the impermeability of concrete (increase in freeze-thaw resistance)
- Reduces corrosion of pipe reinforcement.
- Prevents vomiting and segregation in fresh concrete, improves workability.
- Reduces the heat of concrete hydration clearly and prevents cracking.
- Increases durability and prolongs the life of concrete.
- Increases the resistance of concrete against sulphated waters.
- Reduces costs in concrete production.





## Gypsum Supply Service

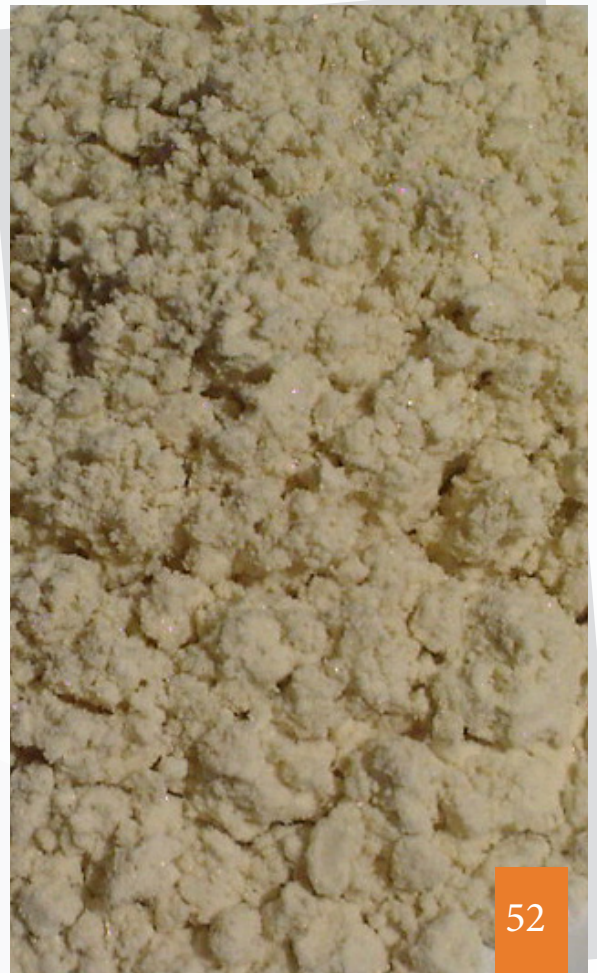
Gypsum is a mineral whose chemical composition is calcium sulphate. In the composition of this mineral, the type which has two molecules of crystal water is called gypsum ( $\text{CaSCM} + 2\text{H}_2\text{O}$ ).

We as EKTON, are also marketing The Gypsum produced in the flue gas desulphurisation unit at a thermal power plant of Iskenderun Energy Production Inc., to organic fertilizer factories as raw materials of sulfur, as well as using in our products.

The desulphurization gypsum produced at the thermal power plant has superior properties for some purposes than natural gypsum. For the purpose of molding plaster, molds which are more resistant than the gypsum produced from natural gypsum can be made.

Gypsum produced in the desulphurization process is used as raw material in the following processes.

1. In the production of gypsum and drywall plate,
2. As a cement additive raw material,
3. Gypsum as mold cast in vitrified materials, porcelain and tile production,
4. Construction plaster production,
5. It is used as the raw material of sulfur in organic fertilizer production.



# Base Ash Supply Service



The base ash produced in the thermal power plant consists mainly of  $\text{SiO}_2$ ,  $\text{Al}_2\text{O}_3$ ,  $\text{Fe}_2\text{O}_3$ ,  $\text{CaO}$  compounds. It has a porous structure. It is a by-product with a grain size of 1,00mm-15mm.

Usage areas :

It is used as a raw material in the production of briquettes, ready-made plaster and block brick. It is also used as a pozzolan additive for cement production.

Base ash, as the structure and physical properties, serves as a good isolation. For this purpose, briquette and block bricks with added ash are preferred in the construction sector due to the advantage of insulation factor.

# Sand Supply Service

EKTON continues to meet all the demands from its customers with its sand pits on it's own.



# Excavation and Stream Improvement Practices

Ekton, acting on the knowledge gained from the sector, prepares solid grounds for the future with its wide machine park in order to meet all the demands from customers.



*Prepares Solid Ground for the Future...*



# AYAS ENERGY PRODUCTION AND TRADE INC

**DESCRIPTION:** AYAŞ 600 MW THERMAL POWER PLANT, PLANT'S LEVELING, EXTENSION OF EXCAVATION AND WAREHOUSE AREAS, IMPROVEMENT OF EXISTING STAFFES, KIZLARSUYU STREAM AND IT'S BRANCEHS, CONNECTION AND BRIDGE CONSTRUCTION

**EMPLOYER:** AYAS ENERGY PRODUCTION AND TRADE INC.

**PLACE OF WORK:** YUMURTALIK / ADANA

**ESTIMATED COST:** 25.319.696,50 USD

**START DATE:** 01.09.2009

**DATE OF COMPLETION:** 11.06.2010

**DURATION:** 283 Days

**PROJECT CONTENT:**

4 500 000 m<sup>3</sup> of excavation and filling works, ground improvement of coal storage area; 55 000 m wick drain application with 150.000 m<sup>3</sup> surcharge process, reclamation of Kizlarsuyu Stream located next to existing slopes and plant area; 3000 mt of retaining wall application, preparation of excavated landfills, construction of central access road and bridge construction for the Levelling And Site Preparation Works of AYAS-600 MW Coal Fired Power Plant. 2.500.000 m<sup>3</sup> of excavation was carried out with controlled blasting techniques. Vibration measurements were recorded for each blasting round near the existing power plant.



**General view**



**General view**



**Field View Before Work**



**Preparation For The Controlled Explosion**



**Controlled Explosion**



**Excavation Works**



**Excavation Works**



**Pouring Area Applications**



**Side Slope Regulation**



**Strip Drain Applications**



**Before, Construction Site**



**After, Construction Site**

# Kızlarsuyu Stream Improvement





# İskenderun Enerji Üretim ve Ticaret A.Ş.

**DESCRIPTION:** SUGÖZÜ ENERGY PLANT WASTE STORAGE AREA and NEW WATER COLLECTION POOL CONSTRUCTION WORKS TURNKEY CONSTRUCTION

**EMPLOYER:** İSKENDERUN ENERJİ ÜRETİM VE TİCARET A.Ş

**PLACE OF WORK:** YUMURTALIK / ADANA

**ESTIMATED COST:** 1.689.718,60 USD

**START DATE:** 01.08.2005

**DATE OF COMPLETION:** 29.12.2005

**PERIOD:** 150 Days

**PROJECT INFORMATION:** Within the scope of the project, the first settling pool with a capacity of 2.000 m<sup>3</sup> and a collection pool with a capacity of 23.000 m<sup>3</sup>, 30.000 m<sup>3</sup> excavation and controlled filling, clay coating, geotextile membrane, PE-HD works, reinforced concrete works, pumping facility and various infrastructure works have been completed.



**Construction Site Before**



**View of Completed Construction Site**



**Field Excavation**



**Membrane Application**



**Field Excavation and Membrane Application**



**Field Excavation and Membrane Application**



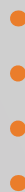
**Field Excavation and Membrane Application**



**A View of Completed Project**

# Agriculture Management

In addition to its commercial successes, Ekton continues to produce various agricultural products by establishing garden facilities in agricultural application areas to contribute to its region and nature.



*With nature, more forward.*



## Almond Garden

**Location:** SARIMAZI / CEYHAN

**DECARE:** 330,70 decares (330,700 m<sup>2</sup>)

**Number of Saplings:** 16,850 Saplings

**TYPE:** Laurene - Ferraduel - Ferragnes

Almond trees are one of the most valuable plants of the Middle East. This almond tree, which offers one of the most delicious varieties of nuts almonds to the producer, is a solid indicator that everyone can achieve good results In the case of labor. Almond tree, which is one of the indispensable foods of many cuisines, in the World both sweet and salty, after the third year, begins to give fruit. Trees are sized from 6m to 8m. They form sprawling trees. The average lifetime of the almond tree is around 50 years.



# Pomegranate Garden

**PLACE OF WORK:** ÇİFTLİK HAT / CEYHAN

**DECARE:** 70 decares (70.000 m<sup>2</sup>)

**Number of saplings:** 3,500 Saplings

**TYPE:** Wonderful

The pomegranate culture history which has been produced and consumed for thousands of years in the Middle East and the Caucasus is one of the oldest fruit species. Although it is known as tropical and subtropical climate fruit, production and consumption of pomegranate in the world and in our country is increasing day by day. At the same time, pomegranate is also an important raw material for the pharmaceutical industry as a medicinal plant. The emergence of these properties of pomegranate has a significant role in the increase of production and consumption. The color of the product that grows in our garden is dark red and the grain color is red. Fruits are large - medium and suitable for granulation. Taste is sour and delicious.



## Olive Garden

**Location:** SARIMAZI / CEYHAN

**DECARE:** 120 decare (120.000 m<sup>2</sup>)

**Number of WOOD:** 4,000 Trees

**TYPE:** Sariulak and Gemlik

Olive trees have a very important role in the continuity of the ecological balance, and can live in arid lands, not very selective in terms of soil and can be grown under difficult weather conditions with a need for maintenance. In addition, olive trees reduce the level of carbon dioxide in the atmosphere and help the environment.

# Renewable Energy Production Activity

EKTON plans to establish and operate an electricity power plant based on biomass energy. This facility is aimed to provide benefit to our country by building with the motto "green energy for a livable World" as well as contributing the regions economy, as an environmentally friendly company.

For this purpose:

- Implementation of the project will contribute to meeting the energy requirements of the industry in the region.
- The agricultural enterprises of agricultural enterprises will be eliminated in terms of preparation for the new planting period.
- Depending on this, the environmental pollution caused by the burning of the stubble will be eliminated and the flora and fauna of the environment will not be adversely affected.
- Will contribute to regional employment.



*Green Energy for a livable World...*



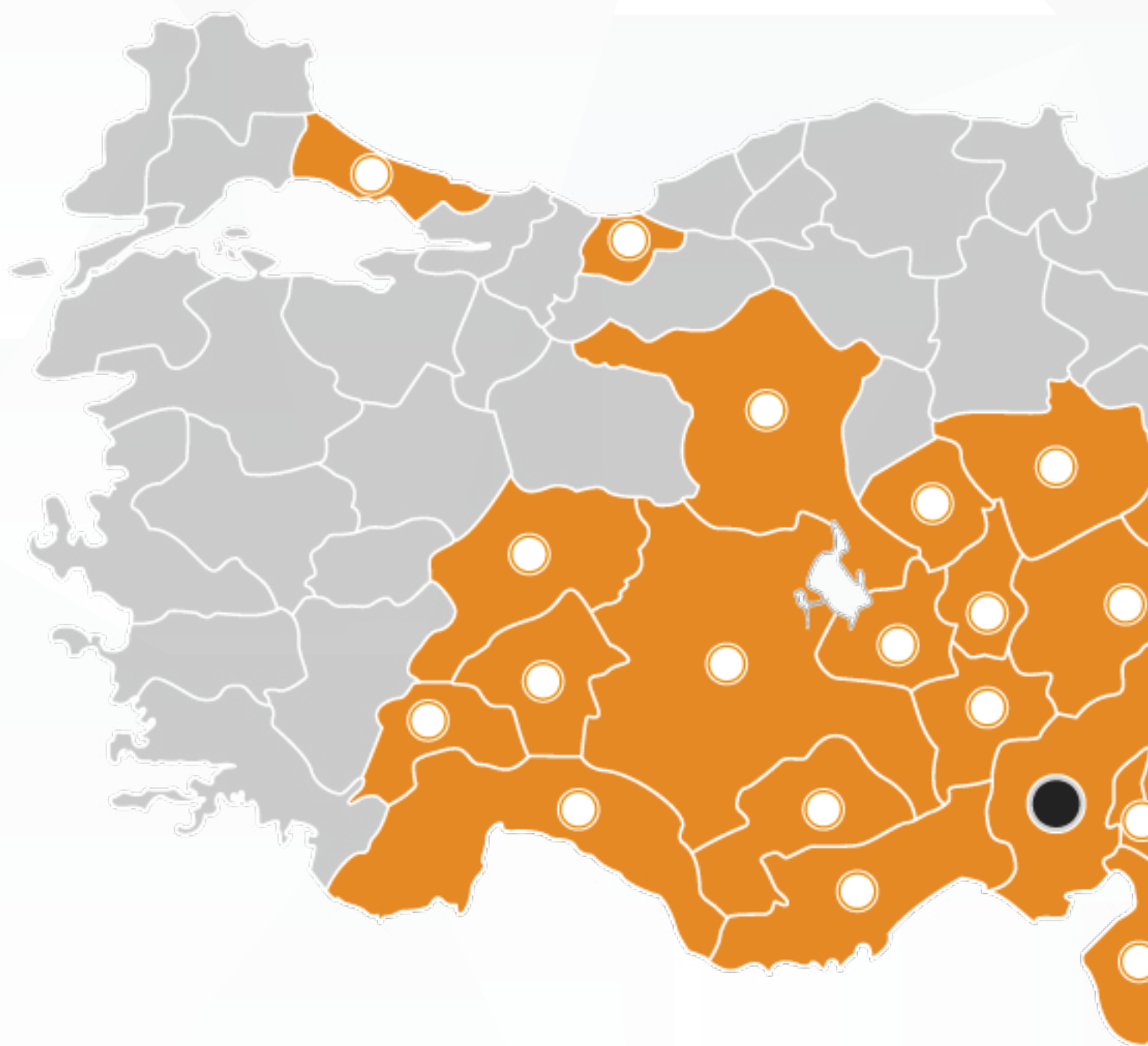
\* Images are for representation.

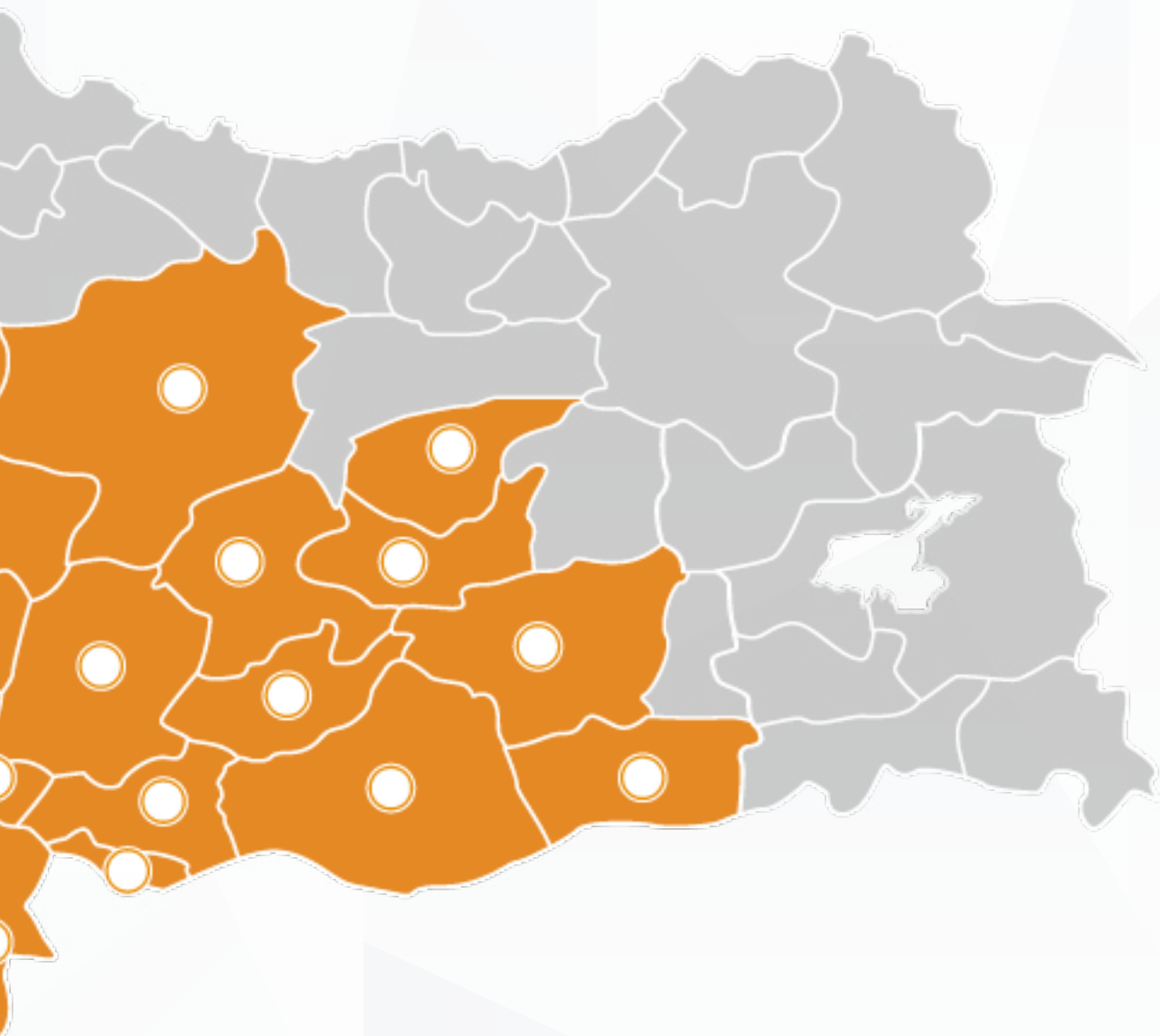






## OUR SALES AND SUPPLY NETWORK





## **OUR SALES AND SUPPLY NETWORK**

*"Ekton, is wherever you seek trust ..."*



D400 Karayolu Bulvarı Koruklu  
Mahallesi No:21  
Ceyhan / ADANA / TÜRKİYE

+90 322 613 88 89 ( Pbx )

ekton@ekton.com.tr

www.**ekton**.com.tr